

### Emergency contact

<b>Administrative agencies</b>	<b>Phone number</b>	<b>Utilities</b>	<b>Phone number / URL</b>
<b>Name</b>	<b>Phone number</b>	<b>Name</b>	<b>Phone number / URL</b>
<b>Kusatsu Town Office</b>	0279-88-0001	<b>Water and Sewerage Section, Love Town Department, Kusatsu Town</b>	0279-88-7183
<b>Kusatsu Town General Health and Welfare Center</b>	0279-88-5797	<b>Hot Spring Section, Love Town Department, Kusatsu Town</b>	0279-88-7182
<b>Western Fire Station, Agatsuma Wide-Area Fire Headquarters</b>	0279-88-0119	<b>Civil Engineering Section, Love Town Department, Kusatsu Town</b>	0279-88-7184
<b>Kusatsu Town Police Box, Nagahara Police Station</b>	0279-88-2100	<b>Clean Center</b>	0279-88-2407
		<b>TEPCO Power Grid Power Outage Information</b>	<a href="https://teideninfo.tepco.co.jp/">https://teideninfo.tepco.co.jp/</a>

### How to get information

**E-mail distribution service for disaster management administration** (Registration required)  
The content broadcast via the disaster management administration radio, such as disaster management information, is distributed by e-mail. Registration is required in advance to use this service.  
If you send a blank e-mail to the e-mail address listed on the right (or read the two-dimensional code), you will receive a registration completion e-mail from the registration confirmation address.  
\*Ensure that you can receive e-mails from the registration confirmation address (ml.kusatsu-e-park.ne.jp) in advance.

**Emergency alert e-mail**  
Emergency information is distributed to mobile phones and smartphones that support emergency alert e-mails. No pre-registration is required.  
(Contact your mobile phone provider for details.)

**Check information on TV**  
TV's **7** button (NHK data broadcasting)  
On TVs that support data broadcasting, pressing the **7** button on the remote control allows you to check rain information and river information.

**Check information on the Internet**  
**Kusatsu Town Office website**  
Disaster management information, evacuation information, etc.  
URL: <https://www.town.kusatsu.gunma.jp/>

**Disaster management information from the Prefectural Land Development Department, Gunma Prefecture**  
Disaster information, traffic restriction information, etc.  
URL: <https://www.kendobousai-gunma.jp/gismap/index.html>

**How to make contact when the phone does not connect**  
You can use it to contact your family and acquaintances when you cannot get a connection on the phone during a disaster.

**Disaster Emergency Message Dial 171 (NTT)**  
URL: <https://www.ntt-east.co.jp/saigai/voice171/>

**Web 171 (NTT)**  
URL: <https://www.web171.jp/>

\*You can also use the Disaster Emergency Message Board with your mobile phone or smartphone to confirm safety. For details, refer to the information provided by your mobile phone provider.

### Preparation of emergency items and stockpiles

- Food (retort food, canned food, seasonings, soup, instant miso soup, hardtack, etc.) for at least 3 days **x3 days' worth**
- Drinking water (3 liters per person per day) for at least 3 days
- Toilet supplies (portable toilets, waste storage containers, toilet bags, toilet paper) for at least 3 days
- Infection control supplies (masks, alcohol disinfectant, thermometers, hand soap, slippers and indoor shoes, vinyl gloves)
- Valuables (cash and coins (10 yen coins), passbooks, health insurance cards and drivers' licenses, signature stamps, cards, etc.)
- Medical products (band-aids, household medicines, etc.)
- Clothing (clothes, underwear, towels, blankets and sleeping bags, etc.)
- Flashlights
- Portable radios
- Extra batteries and chargers (mobile phone)
- Lanterns and candles, matches and lighters
- Tissues, wet wipes
- Simple tableware (disposable chopsticks and paper plates), knives, can openers
- Plastic bags, garbage bags, plastic wraps
- Disposable heat packs
- Work gloves, ropes
- Helmets, emergency hoods

\*Families with infants, elderly people, and people with disabilities should prepare other necessities.  
\*You should prepare a backpack so that you can take it in case of emergency.

Published by Kusatsu Town, Planned and edited by General Affairs Section, Kusatsu Town (TEL: 0279-88-0001), I.D.A Co., Ltd.  
This hazard map is based on the Digital Map (Basic Geographical Information), Digital Japan Basic Map (Map Information) and Fundamental Geospatial Data. (Approval by the Director-General of the Geospatial Information Authority of Japan based on the Survey Act (No. 146, 1963))

# To protect lives from sediment disasters and flooding

### Sediment disasters: Essential tips for evacuation

**Watch out for rain and warning signs, and evacuate early**  
Sediment disasters are very difficult phenomena to issue evacuation information for. Even without information, take the initiative to seize the opportunity to evacuate.

If it is dangerous to go outside because of heavy rain...  
If you feel it is dangerous to go to an evacuation shelter, do not force yourself to evacuate. Instead, protect yourself in a sturdy building on the second floor or higher, away from slopes.

### Flooding: Essential tips for evacuation

**Go to a safe place early before inundation occurs**  
It is very dangerous to evacuate through the inundated areas. Confirm what information can be used for evacuation before inundation occurs and seize the opportunity to evacuate.

If inundation starts...  
After inundation occurs, do not force yourself to evacuate. Instead, protect yourself in a nearby tall building or a high place in your house.

### Alert level / Evacuation information

<b>Alert level 1</b> Enhance preparedness for disasters Risk of worsening weather conditions in the future Early caution information <Announced by the Japan Meteorological Agency>	<b>Alert level 2</b> Confirm your own evacuation actions Worsening of weather conditions Heavy rain advisory, flooding advisory, etc. <Announced by the Japan Meteorological Agency>	<b>Risk of disaster</b> Evacuation of elderly people, etc.* <Issued by Kusatsu Town> *Those who take longer to travel to an evacuation site	<b>Alert level 4</b> Everyone evacuates from dangerous places High risk of disaster Evacuation order <Issued by Kusatsu Town>
-------------------------------------------------------------------------------------------------------------------------------------------------------------------------------------------------	--------------------------------------------------------------------------------------------------------------------------------------------------------------------------------------------------	------------------------------------------------------------------------------------------------------------------------------------------------------	-------------------------------------------------------------------------------------------------------------------------------------------

**Be sure to evacuate by alert level 4!**  
Alert level 4 is not necessarily issued, owing to reasons such as municipalities not being able to accurately assess the disaster situation.

**Emergency safety assurance**  
<Issued by Kusatsu Town to the extent possible>  
Occurrence or imminent threat of disaster  
Life-threatening danger  
Immediately ensure your safety!  
<Announced by the Japan Meteorological Agency>

**Heavy rain emergency warning**  
Equivalent to alert level  
<Announced by the Japan Meteorological Agency and Gunma Prefecture>

**Sediment disaster warning information**  
Equivalent to alert level  
<Announced by the Japan Meteorological Agency and Gunma Prefecture>

**Heavy rain warning (sediment disaster), flooding warning**  
Equivalent to alert level  
<Announced by the Japan Meteorological Agency>

**Flooding: Essential tips for evacuation**  
Those who take longer to evacuate act especially early.  
If you notice any unusual changes or warning signs around you, share the information.

**Sediment disasters: Essential tips for evacuation**  
If you notice any unusual changes or warning signs around you, share the information.

**Flooding: Essential tips for evacuation**  
If you feel danger or see or hear evacuation information, go to a safe place such as an evacuation shelter or the house of a relative or friend that will not be inundated.

**Sediment disasters: Essential tips for evacuation**  
Before it gets dark, everyone calls out to each other and evacuate together.

**Flooding: Essential tips for evacuation**  
When inundation approaches, move to a higher position in a nearby tall building.

**Flooding: Essential tips for evacuation**  
Along the river, there is a risk of houses being washed away or the ground being eroded by the fierce flow of the river.

**Sediment disasters: Essential tips for evacuation**  
If it is dangerous to go outside, evacuate to a location on the second floor or higher, away from slopes.

**Flooding: Essential tips for evacuation**  
After inundation occurs, move to a higher position in a sturdy building.

### Precautions when evacuating

When it is expected to rain continuously in the middle of the night, evacuate before it gets dark.

Choose a road away from slopes and swollen rivers.

When you feel danger around you, run into a tall and sturdy building.

When sediment suddenly approaches, protect yourself in a room on the second floor or higher, away from slopes.

In recent years, localized heavy rain and torrential downpours have increased and caused damage in various places. The heavy rain that fell upstream of the river causes the rise in the water level suddenly, and accidents may occur downstream where heavy rain is not falling. During outdoor activities, take precautions such as avoiding visits to swollen rivers and waterways.

**Watch out for any sudden rise in water level!**

### Information to aid evacuation

**Watch out for weather information!**  
Check the weather information and seize the opportunity to evacuate.

**Advisory / Warning / Emergency Warning**  
When there is a risk of disaster due to heavy rain, disaster management weather information such as warnings and advisories will be announced.

<b>Advisory</b> Heavy rain advisory, flooding advisory, etc. It is announced when a disaster is predicted to occur.	<b>Warning</b> Heavy rain warning, flooding warning, etc. It is announced when a serious disaster is predicted to occur.	<b>Emergency warning</b> Heavy rain emergency warning, etc. It is announced when the possibility of a serious disaster is very high.
---------------------------------------------------------------------------------------------------------------------------	--------------------------------------------------------------------------------------------------------------------------------	--------------------------------------------------------------------------------------------------------------------------------------------

**Typhoon intensity**

Classification	Maximum wind speed
Strong	33 m/sec to less than 44 m/sec
Very strong	44 m/sec to less than 54 m/sec
Violent	54 m/sec or more

**Typhoon size**

Classification	Radius of wind velocity of 15 m/sec or more
Large	500 km to less than 800 km
Super large	800 km or more

**Record-Breaking Short-Duration Heavy Rain Information**  
It is announced when intense, short-duration heavy rain occurs that could lead to river flooding or sediment disasters.  
**Kusatsu Town's announcement criteria**  
Hourly rainfall: 100 mm  
From Maebashi Regional Meteorological Observatory

**Sediment disaster warning information**  
It is jointly announced by Gunma Prefecture and the Japan Meteorological Agency when the risk of a sediment disaster increases. Even if the evacuation information is not issued by the Town, check the risk level distribution and other information to decide whether to evacuate.

**Kusatsu Town's announcement criteria**  
Hourly rainfall: 100 mm  
From Maebashi Regional Meteorological Observatory

**Cliff collapse (collapse of steep slopes)**  
Water seeping into the ground softens the slope, causing it to collapse suddenly owing to factors such as rain or earthquakes.  
Cracks are visible on the cliff.  
Water is gushing out from the cliff.  
Pebbles are trickling down the cliff.

**Landslide**  
Owing to the influence of groundwater and other factors, the ground slowly slides down over a wide area.  
Cracks appear in the ground.  
The water of a stream or well becomes murky.

**Debris flow**  
Rocks and sediment from mountainsides and riverbeds are swept downstream all at once by prolonged rain or torrential downpours.  
The mountain is rumbling.  
Water gushes out from the slope.

**Besides...**

- The sound of the ground rumbling, the sound of tree roots tearing, the sound of rocks cracking, etc. can be heard.
- Something smells rotten (smell of leaf mold and manure).
- Small animals behave abnormally (making noises, etc.).

**Watch out for avalanches!**  
Watch out for avalanches on steep slopes as well as slopes where avalanches have occurred in the past.

**When avalanches are likely to occur**

- When temperatures are low from January to February and a large amount of snow falls over a short period of time on top of already considerable snow accumulation.
- In early spring when temperatures rise, or when temperatures rise after rainfall or owing to the Foehn phenomenon, etc.

**Watch out for warning signs of avalanches!**  
If you see any of the following, absolutely avoid approaching.

- Snow cornice**  
Snow overhangs from the mountain ridge.
- Crack**  
Scratch-like cracks appear in the snow on the slope.
- Curled snow on slant roof**  
Snow overhangs from the avalanche barriers.
- Flat slope**  
The snow has accumulated so evenly on the slope that the original terrain is unrecognizable.
- Snow wrinkle**  
Wrinkled patterns appear on the surface of the accumulated snow.
- Snowball**  
Lumps of snow like balls tumbling down the slope. (Parts of a snow cornice or curled snow on a slanted roof)

# To protect lives from earthquakes

### Earthquakes: Essential tips before occurrence

**Prior seismic retrofitting of buildings and securing furniture is of the highest priority.**  
In the 1995 Great Hanshin-Awaji Earthquake, over 80% of the casualties were caused by building collapse. Earthquake damage happens in an instant. Preparation in advance is most important. In particular, for wooden houses built before 1981 (under the old seismic standards), reinforce them as necessary.

**Check your home's earthquake preparedness.**

- Reduce roof weight
- Firmly secure antennas, etc.
- Apply shatter-resistant film or hang curtains on nearby windows.
- Reinforce columns and beams
- Hang thick curtains
- Consider the furniture arrangement in the bedroom
- Place shoes and a flashlight by the bedside
- Do not sleep where furniture may fall over.
- Secure loose items with string
- Prevent injury from glass
- Apply shatter-resistant films to the glasses in children's rooms, living rooms, dining rooms, and on glass panels on items like kitchen cabinets
- Install hedges or similar instead of block walls.
- Prevent furniture from falling over
- Always keep water stored
- Reinforce the foundation and base
- Attach fasteners on the door
- Install fire extinguishers

**Secure furniture**  
\*When securing using L-shaped metal fittings or screw eyes, attach them to areas with wall studs or horizontal beams.

- Screw eye
- Wire
- Flat metal fitting
- L-shaped metal fitting
- Anti-slip
- Compression pole (tension rod)

\*Consult the manufacturer or retailer regarding how to secure a piano.

### Earthquakes: Essential tips at the time of occurrence

**If you feel shaking, ensure your safety**  
Ensure your safety according to the situation, whether you are indoors or outdoors, or if there is a risk of cliff collapse.

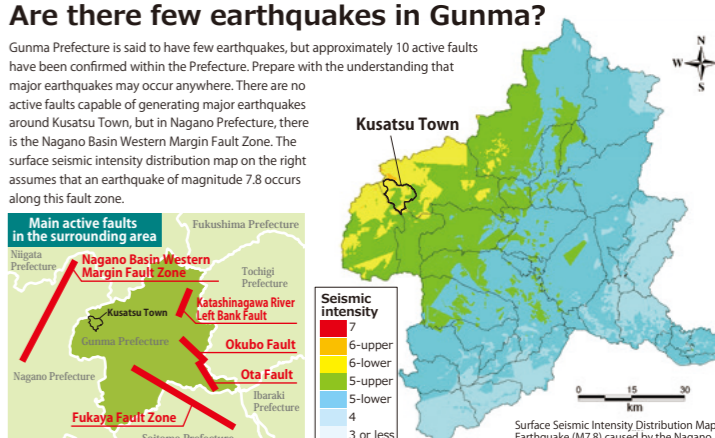
**When you feel a sudden jolt!**

- Ensure your safety**  
If you feel shaking or see or hear an emergency earthquake alert, protect yourself under a table or in a wide open space where there is no danger of falling objects, and protect your head.
- Put out any fire**  
When the shaking stops, check all fire sources.
- Avoid approaching dangerous places**  
Owing to the risk of cliff collapse, avoid approaching mountains and cliffs. Also, avoid approaching fallen utility poles and broken electric wires.

**After the earthquake, if it seems possible to live at home...**

**You do not need to go to the evacuation shelter. Prepare stockpiles in advance.**  
Utilities may be disrupted. Having stockpiles on hand provides peace of mind for the few days until utilities are restored. **x3 days' worth**

**When there is a risk of building collapse, fire, or cliff collapse...**  
Evacuate to a place where you can ensure your safety.  
For example,  
● Evacuation sites designated by the Town  
● Relatives' houses, acquaintances' houses, accommodation facilities, workplaces, etc.



# Kusatsu Town Sediment Disaster / Avalanche / Flooding Disaster Map

This map shows areas potentially at risk for sediment disasters, avalanches, and flood disasters.

**Do not over-rely on the hazard map.**  
 The hazard map is just an assumption. Even if the assumed inundation is shallow or your location is not colored, evacuate if unusually heavy rain is falling or your surroundings seem to be different from usual.

**⚠ There is a risk of sediment disasters near streams and cliffs.**  
 Check "Watch out for warning signs of sediment disasters" on the back.

**⚠ Along the river, there is a risk of houses being washed away or the ground being eroded by the fierce flow of the river.**  
 Houses are washed away or destroyed. The ground is eroded.

### Legend

**1 Designated emergency evacuation site and designated evacuation shelter**  
 A facility for accommodating residents who evacuated owing to disaster risks or who cannot return home owing to disasters

**1 Welfare evacuation shelter**  
 An accessible evacuation shelter where care is provided for elderly people requiring nursing care and persons with disabilities

**Sediment disaster**  
 Sediment disaster (emergency) warning area  
 Sediment disaster emergency warning area  
 Sediment disaster warning area

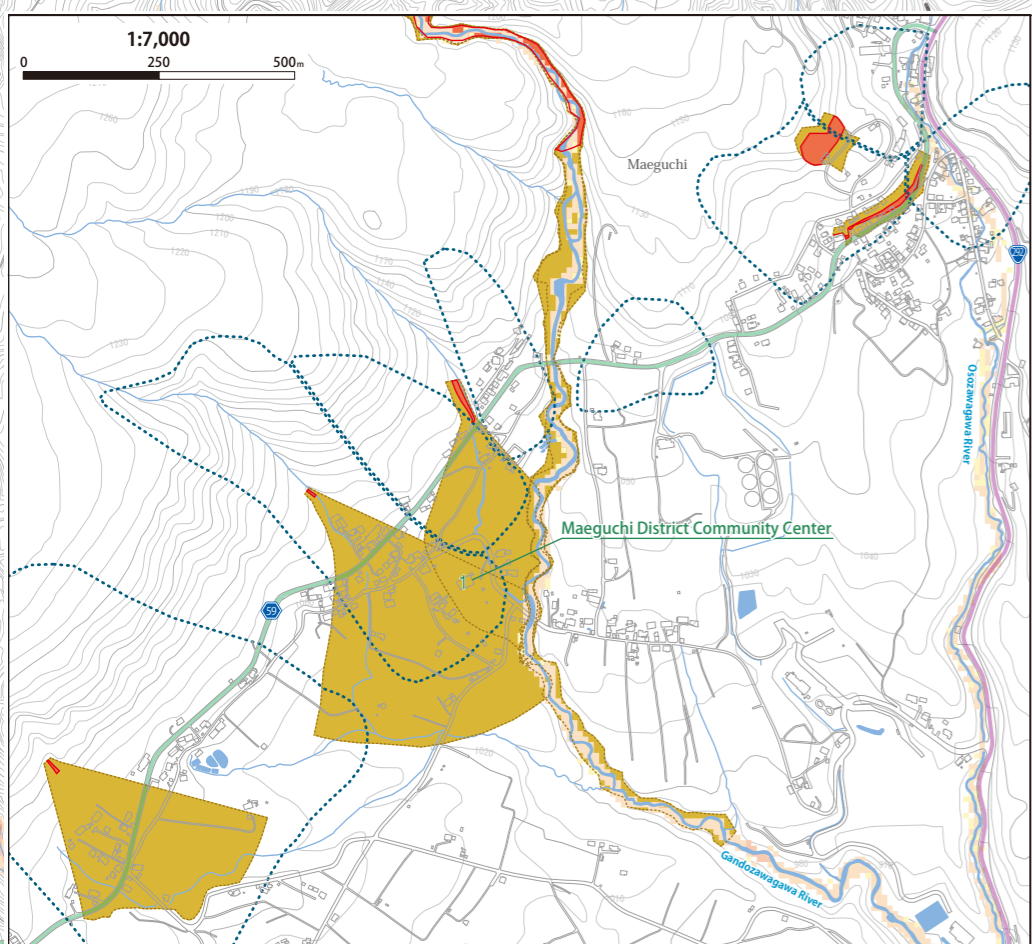
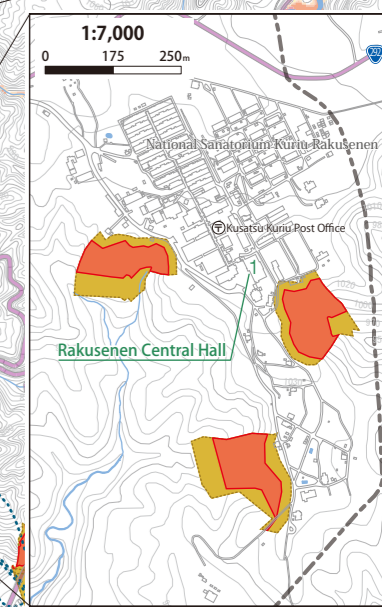
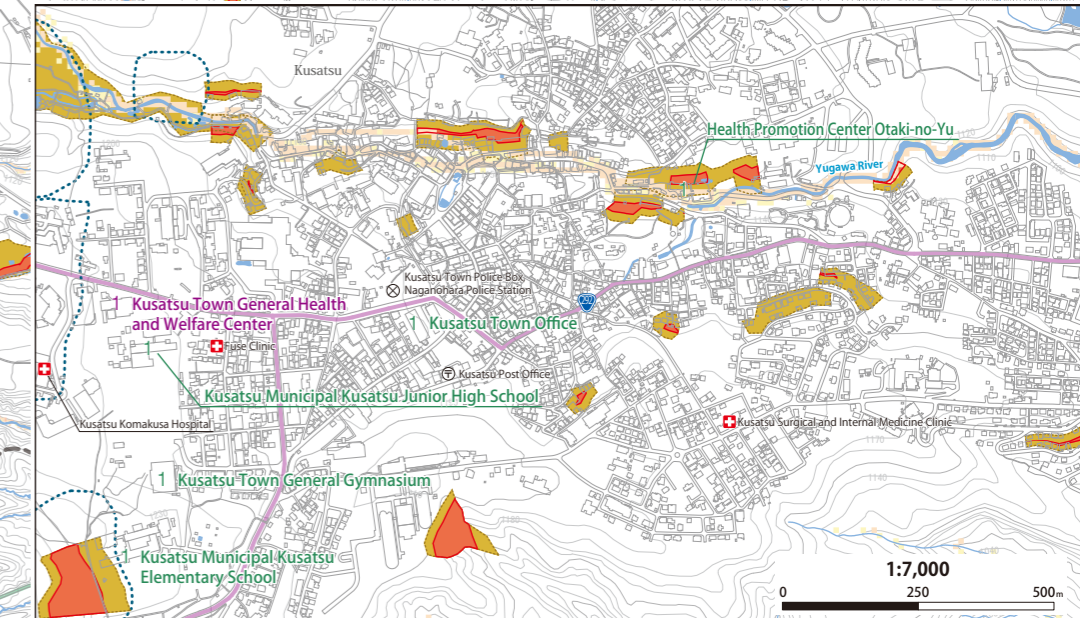
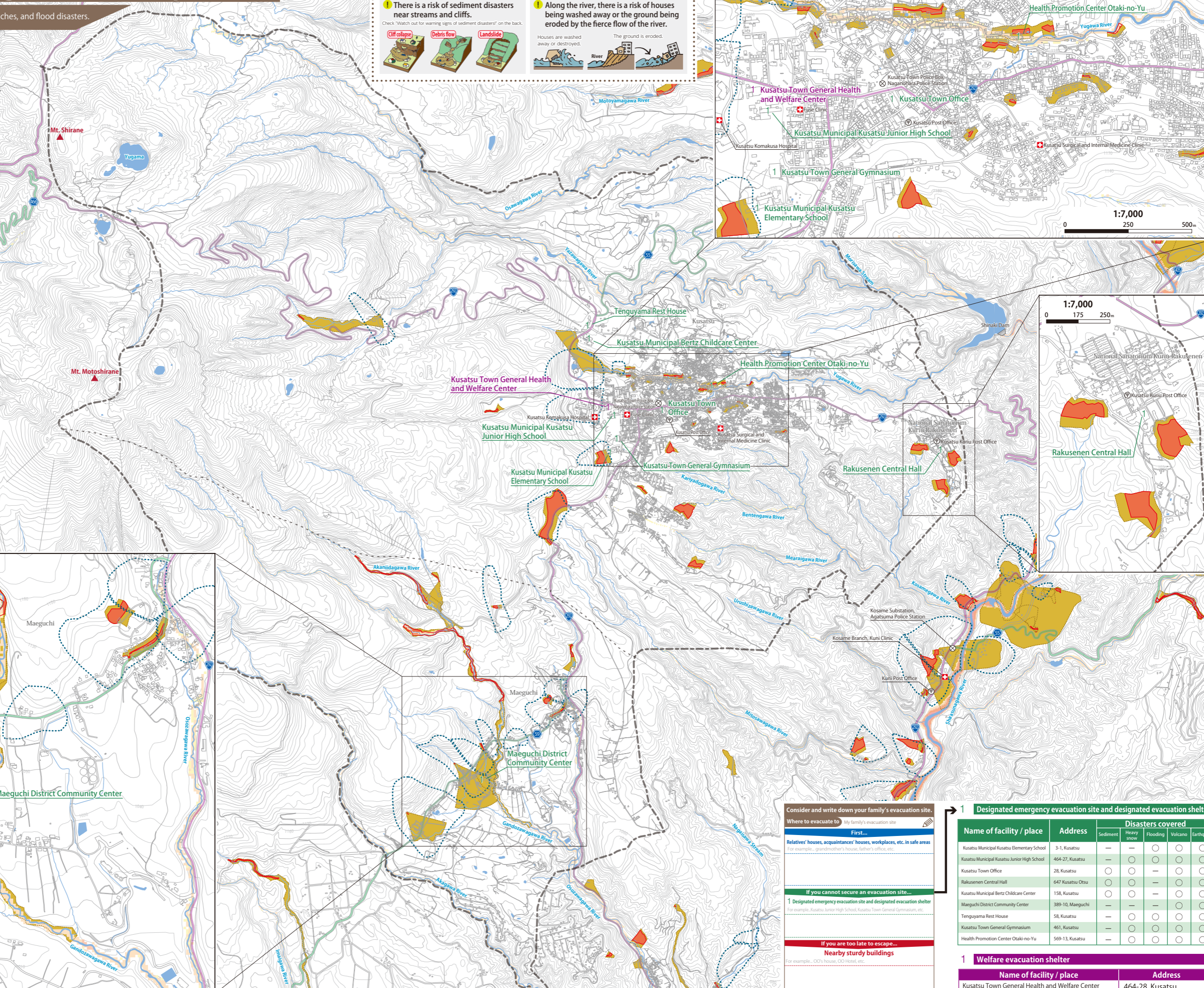
**Flooding disaster**  
 Inundation depth  
 20m: 10 m to less than 20 m (5th to 7th floors inundated)  
 10m: 5 m to less than 10 m (3rd to 4th floors inundated)  
 5m: 3 m to less than 5 m (2nd floor inundated)  
 4m: 3 m to less than 5 m (2nd floor inundated)  
 3m: 0.5 m to less than 3 m (1st floor inundated)  
 2m: 0.5 m to less than 3 m (1st floor inundated)  
 1m: 0.5 m to less than 3 m (1st floor inundated)  
 0.5m: Less than 0.5 m (Subfloor inundated)

**Volcanic disaster**  
 If Mt. Shirane ▲ or Mt. Motoshirane ▲ erupts, there is a risk of volcanic rocks and pyroclastic flows near the crater. Also, ashfall of 5 cm or more is assumed across nearly the entire Town. Health damage and power outage are also assumed, so it is necessary to refrain from non-essential and non-urgent outings and make sufficient preparations so that you can evacuate at home.  
**Check the Mt. Kusatsu-Shirane Volcano Hazard Map for details of volcanic disasters.**  
 URL: <https://www.town.kusatsu.gunma.jp/www/contents/1580116380852/index.html>

**Heavy snow disaster (avalanche)**  
 Avalanche danger area  
 Avalanche danger areas are slopes with an inclination of 15 degrees or more and a height of 10 m or more in heavy snowfall areas where there is a risk of damage to houses and public facilities due to avalanches.  
 Watch out for the snow accumulation and temperature conditions as well as avalanche advisories announced by the Japan Meteorological Agency, and avoid approaching places with a high risk of avalanches.

Gunma Prefecture Tonegawa River Water System Assumed Flooding and Inundation Area Map (Assumed maximum scale) Agatsumagawa River Basin  
 Rainfall underlying the designation  
 Total rainfall for 24 hours: 442 mm  
 Creating entity  
 River Section, Prefectural Land Development Department, Gunma Prefecture  
 Date of designation  
 March 29, 2022

1:18,000  
 0 0.5 1 km



Consider and write down your family's evacuation site.

Where to evacuate to: My family's evacuation site

**First...**  
 Relatives' houses, acquaintances' houses, workplaces, etc. in safe areas  
 For example, grandmother's house, father's office, etc.

**If you cannot secure an evacuation site...**  
 1 Designated emergency evacuation site and designated evacuation shelter  
 For example, Kusatsu Junior High School, Kusatsu Town General Gymnasiums, etc.

**If you are too late to escape...**  
 Nearby sturdy buildings  
 For example, OO's house, OO Hotel, etc.

**1 Designated emergency evacuation site and designated evacuation shelter**

Name of facility / place	Address	Disasters covered				
		Sediment	Heavy snow	Flooding	Volcano	Earthquake
Kusatsu Municipal Kusatsu Elementary School	3-1, Kusatsu	—	—	○	○	○
Kusatsu Municipal Kusatsu Junior High School	464-27, Kusatsu	—	○	○	○	○
Kusatsu Town Office	28, Kusatsu	○	○	—	○	○
Rakusen Central Hall	647 Kusatsu Otsu	○	○	—	○	○
Kusatsu Municipal Bertz Childcare Center	158, Kusatsu	○	○	—	○	○
Maeguchi District Community Center	389-10, Maeguchi	—	—	—	○	○
Tenguyama Rest House	58, Kusatsu	—	○	○	○	○
Kusatsu Town General Gymnasium	461, Kusatsu	—	○	○	○	○
Health Promotion Center Otaki-no-Yu	569-13, Kusatsu	—	○	○	○	○

**1 Welfare evacuation shelter**

Name of facility / place	Address
Kusatsu Town General Health and Welfare Center	464-28, Kusatsu